



# GeBE's Printer Driver for Desktop MS Windows

## “GeBE Universal Driver”

a minidriver for use on Windows 2000/XP/Vista/7

## User Handbook

The GeBE logo is a registered trademark of GeBE Elektronik und Feinwerktechnik GmbH. All other brands named in this brochure are properties of the respective companies. Errors and changes reserved. The technical data given are non-committal information and do not represent any assurance of certain features. Our terms of payment and delivery apply. Copyright © 2009 GeBE Elektronik und Feinwerktechnik GmbH. All rights reserved.

**GeBE Elektronik und Feinwerktechnik GmbH**

Beethovenstr. 15 / D-82110 Germering / Germany / [www.gebe.net](http://www.gebe.net)

Phone:++49 (0) 89/894141-0 / Fax:++49 (0) 89/8402168 / E-Mail: [sales.ef@gebe.net](mailto:sales.ef@gebe.net)

# Contents

|          |  |           |
|----------|--|-----------|
| <b>1</b> | <b>Introduction</b>                                  | <b>3</b>  |
| 1.1      | Supported Devices . . . . .                          | 3         |
| 1.2      | Selecting Your Device . . . . .                      | 3         |
| <b>2</b> | <b>Removal</b>                                       | <b>5</b>  |
| 2.1      | Removing an Installed Printer . . . . .              | 5         |
| 2.2      | Removing Installed Drivers . . . . .                 | 5         |
| <b>3</b> | <b>Installation</b>                                  | <b>7</b>  |
| 3.1      | Installation on Windows XP . . . . .                 | 7         |
| 3.2      | Installation on Windows Vista or Windows 7 . . . . . | 8         |
| <b>4</b> | <b>Configuring the Driver</b>                        | <b>10</b> |
| 4.1      | General Configuration . . . . .                      | 10        |
| 4.1.1    | Setting Printing Defaults . . . . .                  | 10        |
| 4.1.2    | Setting Printing Preferences . . . . .               | 10        |
| 4.1.3    | Setting Device Options . . . . .                     | 10        |
| 4.2      | Printer-specific Configuration . . . . .             | 10        |
|          | <b>List of Figures</b>                               | <b>12</b> |
|          | <b>List of Tables</b>                                | <b>13</b> |

# 1 Introduction

The GeBE Universal Driver is a printer driver built on Microsoft's Universal Printer Driver<sup>1</sup> and can be used with various printers from GeBE's various printer families.

## 1.1 Supported Devices

The “GeBE Universal Driver” is meant to work with all of GeBE's controllers and printers. If your particular device is not in the list provided by the driver, selecting any of the same family should be sufficient. The driver also provides a generic device for all devices of one of GeBE's particular printer concepts (A8, N34, N78, ...).

Table 1.1 shows the devices known to be supported by the “GeBE Universal Driver”<sup>2</sup>.

Table 1.1: Supported Devices

| Product Name                  | Driver Family |
|-------------------------------|---------------|
| GeBE A8-based Printer         | A8            |
| GeBE A8 64K-based Printer     | A8_64k        |
| GeBE N34-based Printer        | N34           |
| GeBE N78-based Printer        | N78           |
| GeBE N78 300dpi               | N78_300       |
| GeBE N78 200x300              | N78_200x300   |
| GeBE Piano GPT-4633           | A8_64k        |
| GeBE Flash / Sky              | N78           |
| GeBE Minimulde GPT-4352-82/87 | N78           |
| GeBE Minimulde GPT-4352-92/93 | A8            |
| GeBE Maximulde                | N78           |
| GeBE Info                     | N34           |
| GeBE Logo                     | N78_Logo      |
| GeBE Compact GPT-677x         | A8_64k        |
| GeBE Compact Plus GPT-467x    | A8_64k        |
| GeBE Info HS GPT-676x         | A8_64k        |
| GeBE Ticket GPT-4762          | A8_64k        |

## 1.2 Selecting Your Device

Even if your device does not appear in the list of supported devices, one may still be able to use one of the drivers for basic graphics printing. During installation, one need only select any of the devices from the same driver family as the product not in the list. Therefore one needs to know a bit about the different driver families and the device itself.

<sup>1</sup>Microsoft Universal Printer Driver <http://msdn.microsoft.com/en-us/library/ms802044.aspx>

<sup>2</sup>The list is not necessarily all inclusive.

**A8** GeBE A8 Printer Concept

- Atmel ATMega microprocessor
- high speed, low cost
- sample products: GeBE Minimulde GPT-4352-92/93

**A8 64K** GeBE A8 Printer Concept, later generation

- Atmel ATMega microprocessor
- with 64K Flash
- high speed, low cost
- sample products: Compact Plus GPT-467x

**N34** GeBE N34 Printer Concept

- NEC microprocessor
- sample product: GeBE Info

**N78** GeBE N78 Printer Concept

- NEC microprocessor (78f0078)
- successor to the N34 series
- sample products: GeBE Flash / Sky

**N78 300** Series from the GeBE N78 Printer Concept

- NEC microprocessor (78f0078)
- printhead with 300dpi
- sample product: GeBE N78 300dpi

**N78 200x300** Series from the GeBE N78 Printer Concept

- NEC microprocessor (78f0078)
- standard printhead with 203dpi but allowing for 300dpi in the print direction
- sample product: any standard GeBE N78 Printer (GeBE Flash)

**N78 Logo** Series from the GeBE N78 Printer Concept

- NEC microprocessor
- standard printhead with 203dpi but printing 300dpi in print direction
- sample product: GeBE Logo

## 2 Removal

This chapter describes how to remove both installed printers as well as installed drivers. Removing the printer itself does not remove the driver installed to print to that printer. The driver would need to be removed separately.

### 2.1 Removing an Installed Printer

Deleting a printer removes it from the list of installed printers. The removed printer no longer appears in the list of available printers to which to print.

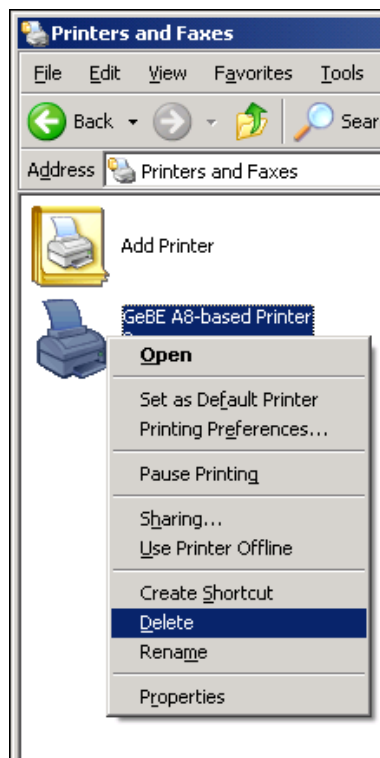


Figure 2.1: Removing an Installed Printer

### 2.2 Removing Installed Drivers

Drivers installed for printers can be removed through the Printer and Fax Server Settings (Figure 2.2). The list of installed drivers can be found under the drivers tab and as long as a driver is not in use, it can be removed as shown in Figure 2.3.

It may not be necessary to remove old versions of the driver, but doing so can assure that conflicts are not caused by mixing files and settings from different driver versions.

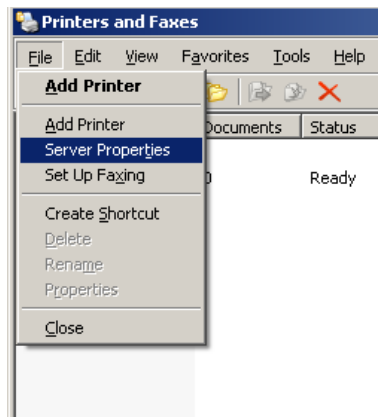


Figure 2.2: Printer and Fax Server Settings

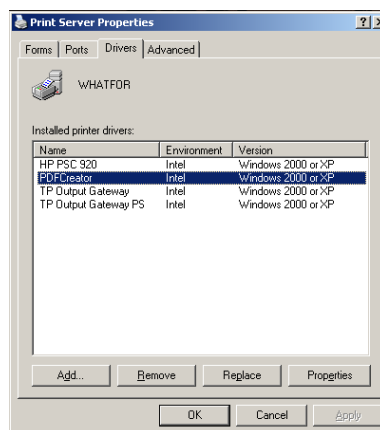


Figure 2.3: Removing Installed Printer Drivers

# 3 Installation

The GeBE Universal Driver is distributed as an archive (i.e. *GeBE\_Universal\_Driver\_2.0.45.0.7z*) which contains a folder and several files within that folder. The contents of the archive should be extracted before starting with the installation.

## 3.1 Installation on Windows XP

Installing a printer using the GeBE Universal Driver is similar to installing any printer on Microsoft Windows.

1. Start the Add Printer Wizard, as shown in Figure 3.1

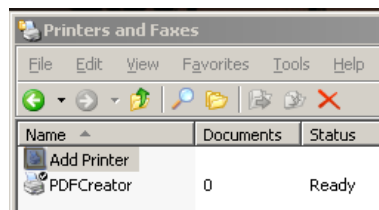


Figure 3.1: Installing a Printer

2. Select to install a local Printer, as shown in Figure 3.2

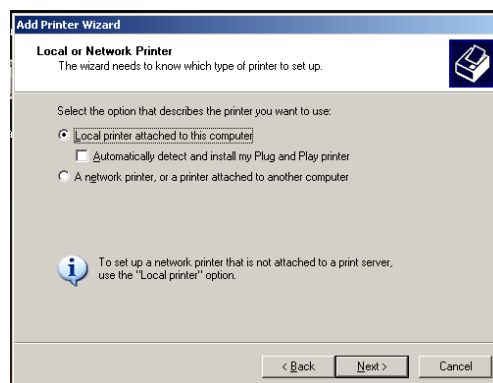


Figure 3.2: Installing a Printer: Local and non-PnP

3. Select the interface corresponding to your setup. Figure 3.3 shows connecting to a printer connected on the Universal Serial Bus using a virtual port.
4. Search and select the driver to use, as shown in Figure 3.4. The driver files were those contained within the archive discusses in Section 3.

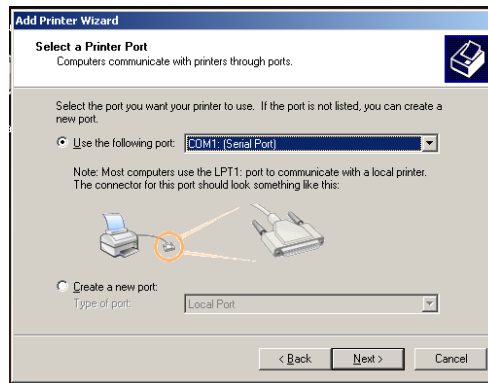


Figure 3.3: Installing a Printer: Select Interface

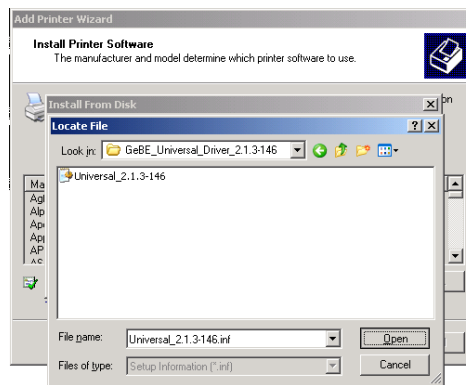


Figure 3.4: Installing a Printer: Search for the Driver

5. Conclude the installation of the printer and driver by selecting the device in the list which matches your hardware, as shown in Figure 3.5. In the case that your specific printer is not in the list, it should be fine to pick any of the printers in the same “Driver Family”.

## 3.2 Installation on Windows Vista or Windows 7

Installing the driver on Windows Vista or Windows 7 is similar to its installation on Windows XP and Windows 2000 but can vary greatly depending on the use of Microsoft’s attempt at UAC<sup>1</sup>.

---

<sup>1</sup>User Account Control



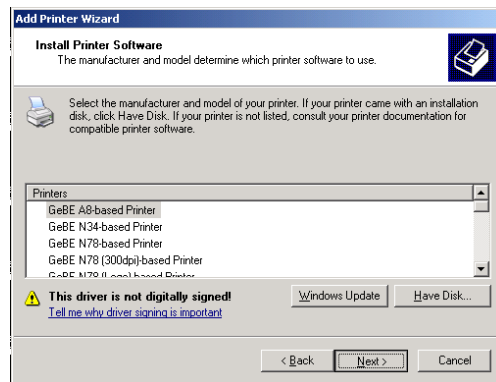


Figure 3.5: Installing a Printer: Select Matching Device

## 4 Configuring the Driver

The user is expected to configure the driver's settings according to the user's needs. Eventually this section should contain descriptions of the available advanced options.

### 4.1 General Configuration

#### 4.1.1 Setting Printing Defaults

Defaults settings for the printer can be set. The window for configuring the default settings is found under the properties of the printer, then under the advanced tab, and the printing defaults button and lastly under the advanced button (Figure 4.1).

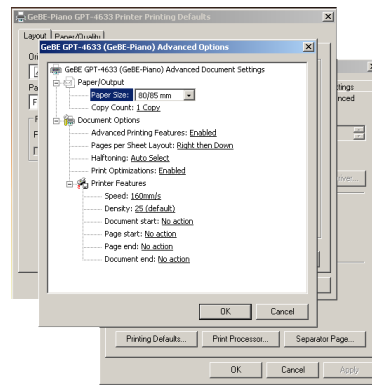


Figure 4.1: Printer and Fax Server Settings

#### 4.1.2 Setting Printing Preferences

The preferences could also be set. Should one wish the preferred settings to be the same as the defaults, it seems one need not configure the settings again in this window. Nonetheless, it may be a good idea to check that they are as expected. This window is found under the properties of the printer, then the general tab, the printing preferences button, and the advanced button (Figure 4.2).

#### 4.1.3 Setting Device Options

Options for the device should also be configured. The window for available settings is found under the device options tab under properties of the printer (Figure 4.3).

### 4.2 Printer-specific Configuration

This section is a placeholder for particular, printer-specific configurations.

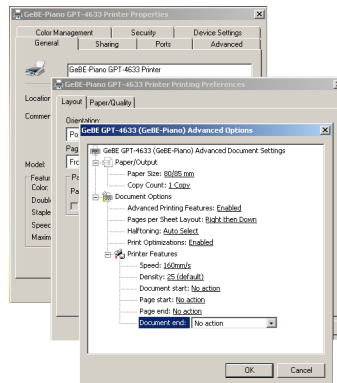


Figure 4.2: Setting Preferences

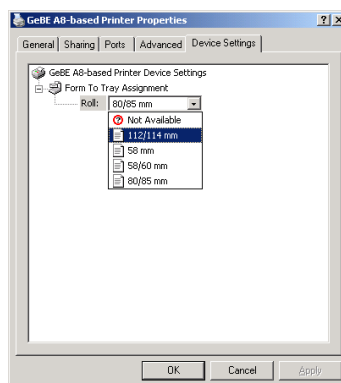


Figure 4.3: Setting Device Options

# List of Figures

|     |  |    |
|-----|--|----|
| 2.1 | Removing an Installed Printer . . . . .                | 5  |
| 2.2 | Printer and Fax Server Settings . . . . .              | 6  |
| 2.3 | Removing Installed Printer Drivers . . . . .           | 6  |
| 3.1 | Installing a Printer . . . . .                         | 7  |
| 3.2 | Installing a Printer: Local and non-PnP . . . . .      | 7  |
| 3.3 | Installing a Printer: Select Interface . . . . .       | 8  |
| 3.4 | Installing a Printer: Search for the Driver . . . . .  | 8  |
| 3.5 | Installing a Printer: Select Matching Device . . . . . | 9  |
| 4.1 | Printer and Fax Server Settings . . . . .              | 10 |
| 4.2 | Setting Preferences . . . . .                          | 11 |
| 4.3 | Setting Device Options . . . . .                       | 11 |

# List of Tables

|                                 |   |
|---------------------------------|---|
| 1.1 Supported Devices . . . . . | 3 |
|---------------------------------|---|